



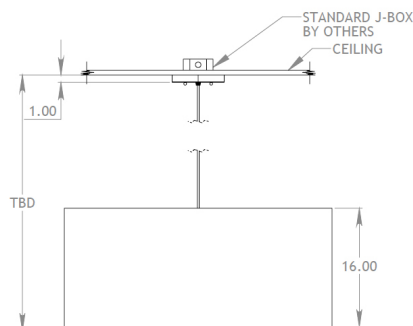
FENG SHUI
LIGHTING

DECORATIVE

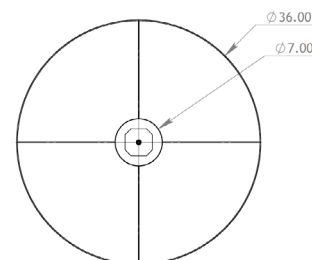
DRUM 36" PENDANT



Side View



Top View



STANDARD FEATURES

- Aluminum Stem and Frame
- Cast Canopy
- Metal Finishes:
 - Satin Nickel Brushed & Lacquered Finish
 - Oil Rubbed Bronze Painted Finish
- UV Resistant Shade Backer Laminate (Fabric only)
- White Opal Acrylic Top Screen and Bottom Lens
- Mounts to Standard J-Box
- NFPA Rated
- Made in USA

CANOPIES

CONTEMPORARY



CC67
7" Dia

TRADITIONAL



TC20
6-7/8" Dia

	FINISH:	CANOPY:	SHADE:	SUSPENSION:	VOLTAGE:	LAMPING:
DP36	<input type="text"/>	<input type="text"/>	<input type="text"/>	<input type="text"/>	<input type="text"/>	<input type="text"/>
	SN = Satin Nickel OB = Oil Rubbed Bronze	CC67 = 7" Dia TC20 = 6-7/8" Dia	____ - Select from our textile or wood veneer options. COM = Customer's Own Material	CBK = Black Cord (6' std.) CCL = Clear Cord (6' std.) CWT = White Cord (6' std.) STM ____ = Single Stem* SLC ____ = Single Stem Sloped Ceiling* * specify length in 6" increments	120 = 120 Volts 277 = 277 Volts	Sockets: LEDE26 LEDGU24 LED Modules: LEDMODS09-30 LEDMODR15-30 LEDMODR16-40 LEDMODR22-40

OPTIONS:

<input type="text"/>	<input type="text"/>	<input type="text"/>
WPE = Clean Laminated Wipeable Protective Finish (fabric only)	SBA = Sandblasted White Acrylic Lens	NBF = No Bottom Finial

Design modifications available - Please consult factory



PROJECT:

SPECIFIER:

TYPE:

QTY:



FENG SHUI
LIGHTING

DECORATIVE

DRUM 36" PENDANT OPTIONS

LAMPING

SOCKETS: We offer several common socket bases that are intended for use with LED replacement lamps. Please note that fixtures specified with these sockets will have wattage restriction labels showing the wattage level noted in the chart to the left. These wattages are common maximum levels for the associated LED replacement lamp. The exact wattage, lumen output, and CCT is a function of the particular LED lamp chosen by the specifier.

LED MODULES: We offer fixtures with integrated LED modules. The voltage available, wattage, lumen output, and CCT are a function of the particular LED Module specified.

For **RGB** and **TUNABLE WHITE** options, please consult factory.

Hi/Lo Variable Occupancy sensors are available on certain LED Modules. Please consult factory.

Sockets	Description	# of Sockets	Maximum Watts per Socket	Total Watts (maximum)	Volts	Dimmable
LEDE26	Medium Base	3	20	60	120	Yes
LEDGU24	Twist and Lock	3	20	60	120	Yes

Modules	# of Modules	Watts per Module	Total Watts per Fixture	Lumens per Module	Total Lumens per Fixture	CRI	Life/ Hours	Input Voltage	CCT	Dimmable	Warranty
LEDMODR09-30	1	8	8	850	850	85+	40,000	120,277	3000K	0-10V Triac/ Phase	5 years
LEDMODR15-30	1	13	13	1500	1500						
LEDMODR16-40	1	13	13	1600	1600						
LEDMODR22-40	1	19	19	2200	2200						

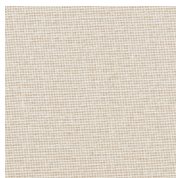
For Recommended Dimmers, please consult factory.

SHADES

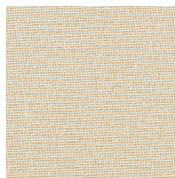
Textiles



BGF
Butcher Linen Beige



BHF
Butcher Linen White



OWF
Butcher Linen Off White



SCF
Silk Sheen Celery

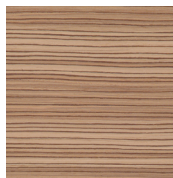


BBF
Butcher Linen Black

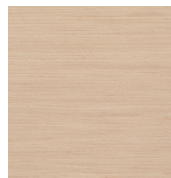


BWF
Butcher Linen Wine

Wood Veneers



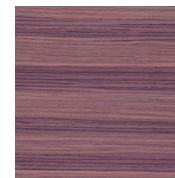
ZWF
Zebrawood Veneer



WOF
White Oak Veneer



MPV
Maple Veneer



RWF
Rosewood Veneer